

**PPSC PRINCIPAL-HM-BPO**

**REASONING**

**LIVE TEST**

**SUBSCRIBE THIS CHANNEL**

**MOCK TEST+REVISION SET+E-BOOKS**

**JOIN ONLINE MOCK TEST SERIES**

**LIVE REASONING TEST LIVE**

**PATWARI-PPSC-HM-BPO-PRINCIPAL**

**IN PSPCL**

**Q1.** Find out the odd word/letters/number/ number pair from the given alternatives.

- (a) Banyan/
- (b) Pine/
- (c) Spruce/
- (d) Fir/

**Q2.** Find out the odd word/letters/number/ number pair from the given alternatives.

- (a) MG
- (b) QK
- (c) VN
- (d) UO

**Q3.** Find out the odd word/letters/number/ number pair from the given alternatives.

- (a) 4267
- (b) 2498
- (c) 2739
- (d) 5496

**Q4.** Find out the odd word/letters/number/ number pair from the given alternatives.

- (a) 8912
- (b) 3469
- (c) 5555
- (d) 6734

Q5. Which set of letters when sequentially placed at the gaps in the given letter series shall complete it?

s\_r\_t\_s\_r

- (a) trts
- (b) rtst
- (c) trst
- (d) tsss

PUNJAB'S BEST

EDUCATION CHANNEL

PUNJAB PATWARI

FREE ONLINE CRASH COURSE

Best Study notes

[www.gilzmentortest.com](http://www.gilzmentortest.com)

WE HAVE GIVEN 100% RESULT

IN PSPCL

**Q6.** In a compass, west direction is shown as south. As per the compass, which direction should a man go to, if he wishes to move towards the east?

- (a) North
- (b) South
- (c) East
- (d) West

**Q7.** A piece of paper is folded and punched as shown below in the question figures. From the given answer figures, indicate how it will appear when opened.



- (a)
- (b)
- (c)
- (d)

Q8. Akhil is the maternal uncle of Rashmi. Rashmi is the daughter of Ramesh. How is Ramesh related to Akhil?

- (a) Brother-in-law/
- (b) Brother
- (c) Father
- (d) Cousin

PUNJAB PATWARI

FREE ONLINE CRASH COURSE

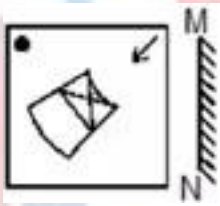
Best Study notes

[www.gilzmentortest.com](http://www.gilzmentortest.com)

WE HAVE GIVEN 100% RESULT

IN PSPCL

Q9. If a mirror is placed on the line MN, then which of the answer figures is the right-image of the given figure?



PUNJAB'S BEST

EDUCATION CHANNEL

PUNJAB PATWARI

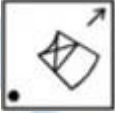



FREE ONLINE CRASH COURSE

Best Study notes


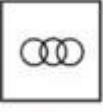
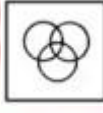

[www.gilzmentortest.com](http://www.gilzmentortest.com)

WE HAVE GIVEN 100% RESULT

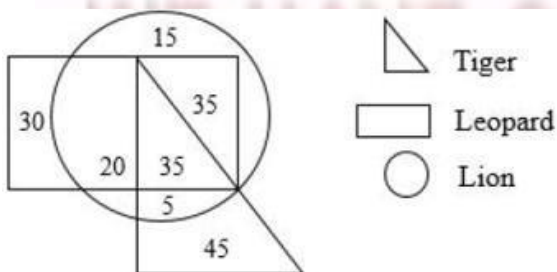
IN PSPCL

- (a) 
- (b) 
- (c) 
- (d) 

**Q10.** Identify the diagram that best represents the relationship among the given classes.  
Primary colors, Red, Black

- (a) 
- (b) 
- (c) 
- 

**Directions (11- 13):** Study the following diagram and answer questions based on it.  
The diagram represents the likes of children in a society.





# PATWARI PAID CRASH COURSE



**+200 VIDEOS LECTURES**



**(125-150) MOCK TEST + SECTIONAL TEST**



**TOPIC WISE TEST**



**SESSION PDF WITH SOLUTIONS**



**E-BOOK**

**TEST AVAILABLE HERE**

**[WWW.GILLZMENTORTEST.COM](http://WWW.GILLZMENTORTEST.COM)**

best study notes

[www.gillzmentortest.com](http://www.gillzmentortest.com)

WE HAVE GIVEN 100% RESULT

IN PSPCL



Q11. The difference between children who like leopard to those who like tiger is

- (a) 50
- (b) 35
- (c) 30
- (d) 5

Q12. How many children like both lion and leopard?

- (a) 35
- (b) 55
- (c) 90
- (d) 95

13. How many children who like lion, also like the tiger?

- (a) 5
- (b) 15
- (c) 35
- (d) 40

**Directions (14-17):** A series is given with one term missing. Choose the correct alternative from the given ones that will complete the series.

**Q14.** Troposphere, Stratosphere, Mesosphere, ?

- (a) Exosphere/
- (b) Thermosphere/
- (c) Tropopause/
- (d) Ozone Layer/

**Q15.** AZ, BY, CX, ?

- (a) WD
- (b) DW
- (c) DE
- (d) DX

**Q16.** DM, EN, FO, ?

- (a) FG
- (b) HI
- (c) GP
- (d) HP

Q17. 79, 159, 199, 219, ?

- (a) 229
- (b) 234
- (c) 239
- (d) 222

Q18. In the following question, two statements are given each followed by two conclusions I and II. You have to consider the statements to be true even if they seem to be at variance from commonly known facts. You have to decide which of the given conclusions, if any, follows from the given statements.

**Statements:**

- Some polynomials are linear equations./
- Some linear equations are quadratic./

**Conclusion:**

- some Polynomials are quadratic./
- some quadratic are Linear equations./

- (a) Conclusion I follows/
- (b) Conclusion II follows/
- (c) Neither I nor II follows/
- (d) Both I and II follows/

Q19. Which signs should be interchanged if the equation below needs to be true?

$$2 \div 16 - 2 + 6 \times 1 = 0$$

- (a)  $\times$  and  $-$
- (b)  $-$  and  $+$
- (c)  $-$  and  $\div$
- (d)  $+$  and  $\times$



# PUNJAB'S BEST

## EDUCATION CHANNEL



**Q20.** A statement followed by some conclusions are given below.

Statement: The price of pulses has increased steeply./ Conclusions: /

I. People cannot buy pulses./

II. Pulses have become a rare commodity

Find which of the given conclusions logically follow from the given statement.

(a) Only conclusion I follows./

(b) Only conclusion II follows./

(c) Both I and II follow./ I और II

(d) Neither I nor II follows./

### FREE ONLINE CRASH COURSE

### Best Study notes

### [www.gilzmentortest.com](http://www.gilzmentortest.com)

### WE HAVE GIVEN 100% RESULT

### IN PSPCL

**Directions (21-23):** Consider the following information and answer questions based on it.

Five pickles – mango, lime, tomato, gooseberry and garlic are kept in five jars, in a row, in a random order, from left to right.

1. Gooseberry is not on either extremes./
2. There is one jar between mango and garlic./
3. Tomato is placed on the left side of lime./
4. The second jar from the left contains garlic./

**Q21.** There are two jars between which of the following–

- |                            |                |
|----------------------------|----------------|
| (a) Lime and Gooseberry/   | (a) Mango      |
| (b) Gooseberry and Tomato/ | (b) Tomato     |
| (c) Mango and Lime/        | (c) Gooseberry |
| (d) Tomato and Mango/      | (d) Lime       |

**Q22.** Lime is in the \_\_\_\_\_ jar from left.

- (a) Fifth
- (b) Fourth
- (c) Third/
- (d) First/

**Q23.** The middle jar contains

Q24. The age of A is three times the age of B. What is the ratio of the age of B to the age of A?

- (a) 1 : 3
- (b) 1 : 4
- (c) 1 : 2
- (d) 3 : 1

PUNJAB PATWARI

FREE ONLINE CRASH COURSE

Best Study notes

[www.gilzmentortest.com](http://www.gilzmentortest.com)

WE HAVE GIVEN 100% RESULT  
IN PSPCL

**Q25.** Arrange the given words in the sequence in which they occur in the dictionary.

- i. Attribute
- ii. Attenuation
- iii. Attain
- iv. Attention

- (a) iii, iv, ii, i
- (b) iv, i, iii, ii
- (c) i, iii, ii, iv
- (d) i, ii, iii, iv

**Q26.** In a certain code language, "FAILURE" is written as "FRULIAG". How is "SUCCESS" written in that code language?

- (a) TSECCUT
- (b) SSECCUS
- (c) TSECCUS
- (d) TSECCUU

**Q27.** In the following question, select the missing number from the given series.

?	113	161
2	7	6
3	4	5

- (a) 31
- (b) 36
- (c) 280
- (d) 161

**Q28.** If "A" denotes "added to", "B" denotes "divided by", "C" denotes "multiplied by" and "D" denotes "subtracted from", then  $154 \text{ B } 11 \text{ C } 6 \text{ A } 6 \text{ D } 27 = ?$

$11 \text{ C } 6 \text{ A } 6 \text{ D } 27 = ?$

- (a) 60
- (b) 63
- (c) 33
- (d) 64

**Q29.** Looking at a photo, Anand said, "This man is the eldest son of my father's mother-in-law". How is Anand's mother related to this man?

- (a) Mother
- (b) Daughter
- (c) Maternal Aunt
- (d) Sister

**Q30.** An assertion (A) and a reason (R) are given below.

Assertion (A): Leaves are green in colour./

Reason (R): Chlorophyll, a green pigment is present in leaves./

Choose the correct option.

- (a) Both A and R are true and R is the correct explanation of A/
- (b) Both A and R are true, but R is not the correct explanation of A/
- (c) A is true, but R is false/A



(d) A is false, but R is true/A



**PUNJAB'S BEST**

EDUCATION CHANNEL



**PUNJAB PATWARI**

**FREE ONLINE CRASH COURSE**

**Best Study notes**

**[www.gilzmentortest.com](http://www.gilzmentortest.com)**

**WE HAVE GIVEN 100% RESULT**

**IN PSPCL**